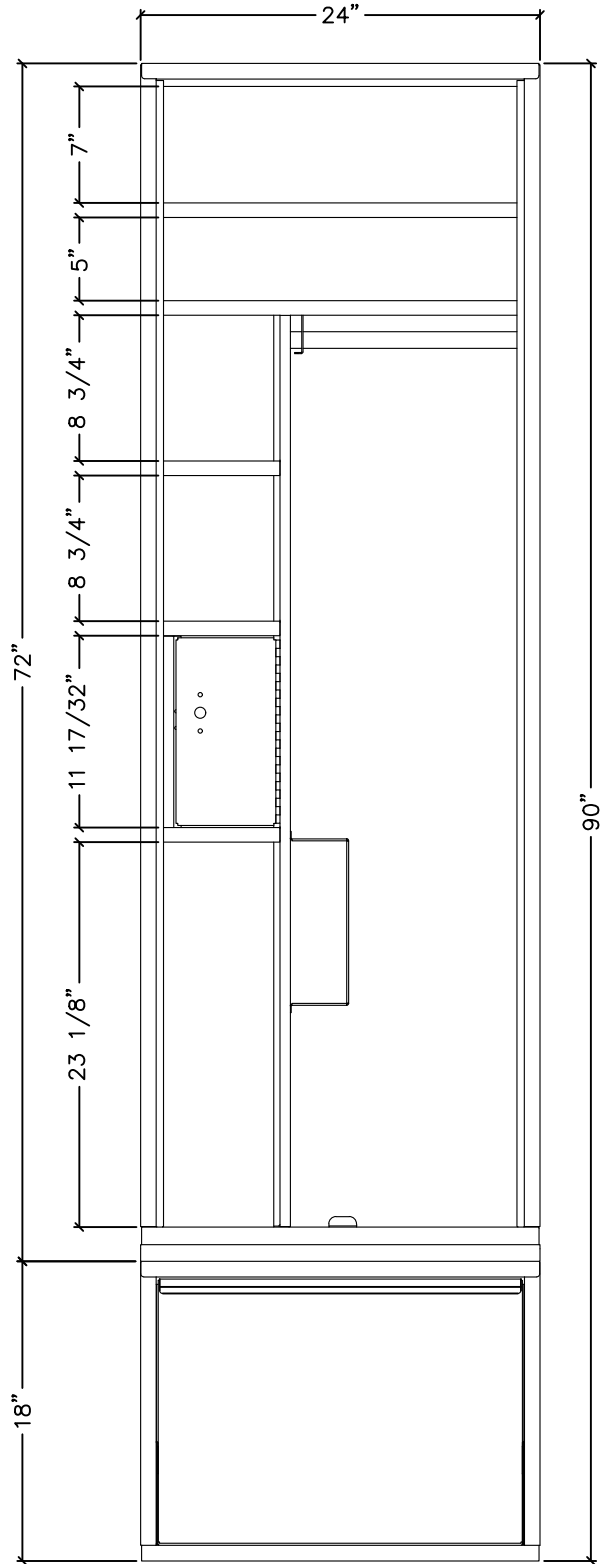
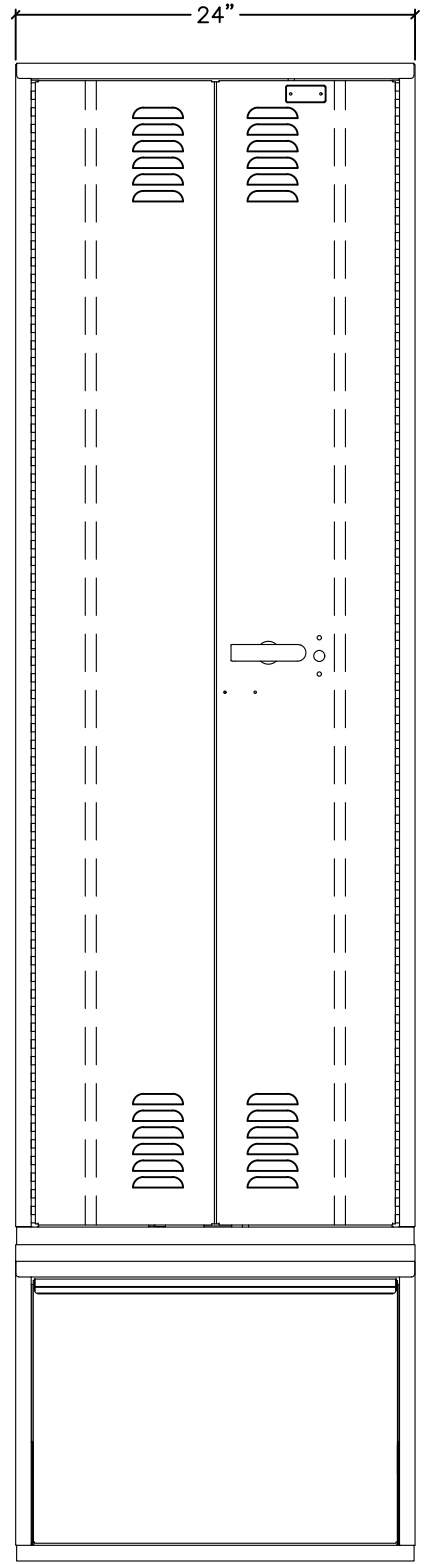
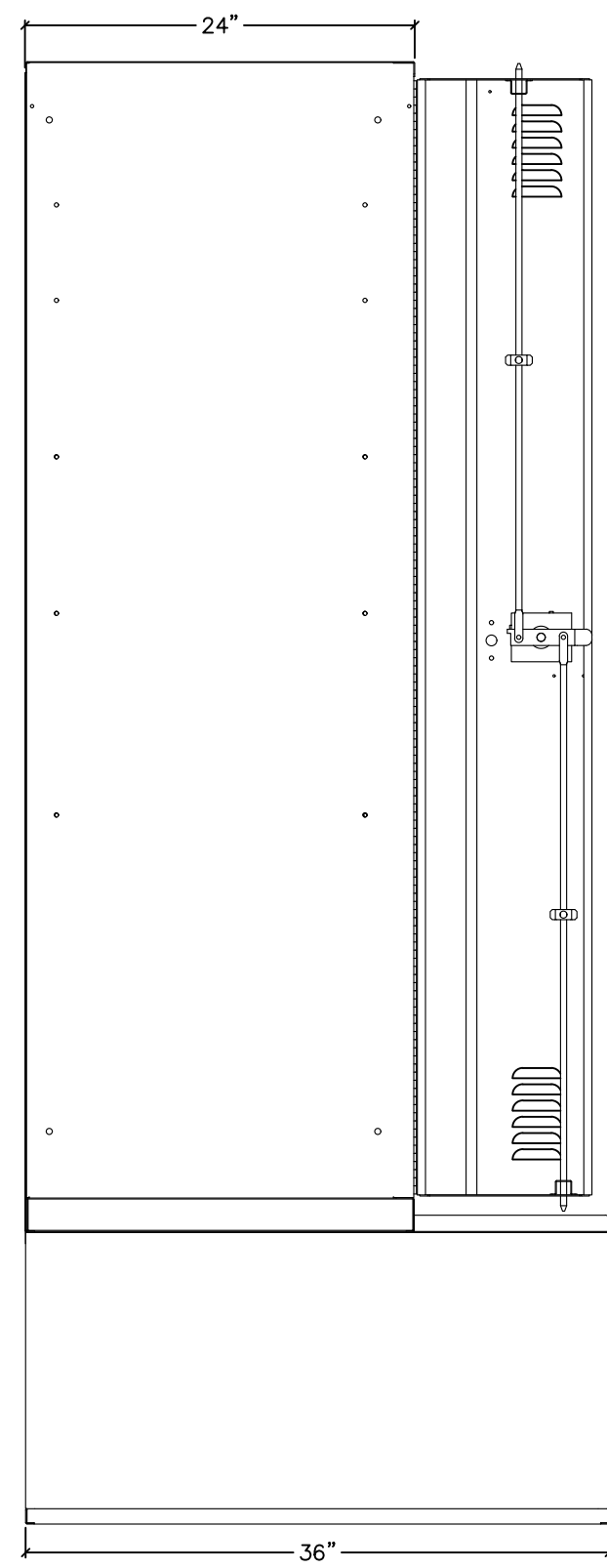


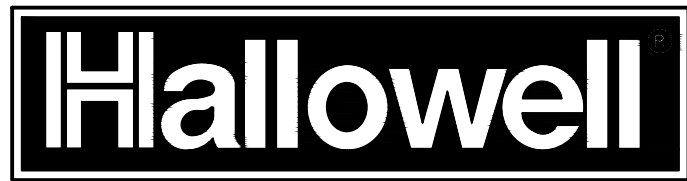
HALLOWELL "TASKFORCE XP" SINGLE TIER DOUBLE DOORS LOCKER (PRODUCT No. HERL442-1SL-G)
 HALLOWELL "TASKFORCE XP" SBASE DRAWER LOCKER (PRODUCT No. HERL243618BD-SL-G)



HALLOWELL TASKFORCE ALL-WELDED LOCKER SPECIFICATION

COMPONENT	GAUGE	MATERIAL	REMARKS
DOORS	14	C.R.S, GALVANNEALED	3" LOUVERED
DOOR STIFFENER	18	C.R.S, GALVANNEALED	FULL HEIGHT
FRAMES	16	C.R.S, GALVANNEALED	SOLID - TWIN-FRAME
TOPS	16	C.R.S, GALVANNEALED	SOLID
BOTTOMS	16	C.R.S, GALVANNEALED	SOLID
SHELVES	16	C.R.S, GALVANNEALED	SOLID
SIDES	16	C.R.S, GALVANNEALED	SOLID
BACKS	18	C.R.S, GALVANNEALED	SOLID
SECURITY BOX DOOR	14	C.R.S, GALVANNEALED	PLAIN WITH KEYED LOCK
HANDLES		COLD ROLLED STEEL	3-POINT TURN HANDLE
HINGE	16	COLD ROLLED STEEL	CONTINUOUS PIANO TYPE
COAT ROD		STAINLESS STEEL	
SEAT		LAMINATED HARDWOOD	1" THICK

COLOR: 725 DARK GRAY



THIS DRAWING AND THE INFORMATION ON IT IS THE CONFIDENTIAL PROPERTY OF HALLOWELL, INC. AND SHALL NOT BE COPIED OR DISCLOSED TO OTHERS WITHOUT WRITTEN PERMISSION. ONLY HALLOWELL, INC. RESERVES THE RIGHT TO ALTER ANY DESIGN. ANY UNAUTHORIZED MODIFICATIONS RELEASES HALLOWELL, INC. FROM ALL LIABILITIES.

TOLERANCES UNLESS SPECIFIED:
 FRACTIONS: ±1/32 DECIMALS: ±.010 DEGREES: ±1°

Customer: Material Distributors, Inc.
 Customer Order Number: -
 Description: Taskforce Locker

Drawn By: SP	Checked By:	Date: 03.07.2024	Scale: NONE
Acad Number: E1		Sheet 1 Of 1	Revision:
Drawing Number:		CUT SHEET	